

BIOLOGY

STAFF CONTACT:

Mr Andrew Rowan: arowan@farmors.gloucs.sch.uk

COURSE CONTENT:

Areas of study include human biology such as the nervous and endocrine systems as well as genetics. Further study includes cell structure, biological molecules, nucleic acids, enzymes, cell division and organisation. Also covered are means of transport in plants and animals as well as diseases, immune systems, biodiversity, classification and evolution. You will also develop practical skills through a range of activities.

RESULTS 2013-16

A*-B 51% | A*-C 81% | A*-E 99%

In 2015 this Biology department was in the top 1% in the country for student progress.



STUDENTS ON AVERAGE ACHIEVED OVER HALF A GRADE ABOVE THEIR PREDICTED GRADES BASED ON PRIOR GCSE ATTAINMENT.

EXAMS:

3 exams at the end of Y13 plus 12 practical assessments graded at pass/fail.

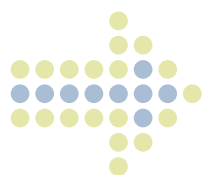
EXAM BOARD: OCR

CAREER OPPORTUNITIES:

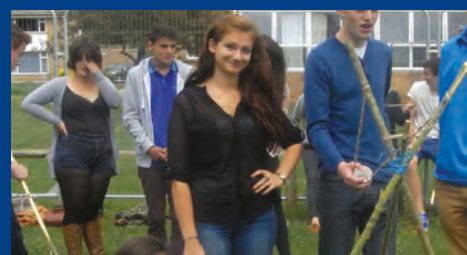
Medicine
Dentistry
Environmental Science
Food Industry
Biochemistry
Pharmaceutical Industry
Psychology
Sports Science
Biotechnology
Veterinary Science

INDUSTRY LINKS AND WORK EXPERIENCE & TRIPS:

Lecture days at Warwick University
Field trips
Science Support in Primary School



STUDENT PROFILE:



Maggie Harrison

Previous School Farmor's. Studied Biology, French and Spanish. Now studying Midwifery in Southampton University.

ENTRY REQUIREMENTS:

Sixth Form entry criteria plus:
Minimum GCSE grade BB in Double Science or BBB in Triple Science

